



# GAME NOTES

# CLEMSON SOFTBALL

TEAM 6

## CLEMSON HOSTS NORTH CAROLINA

Friday, March 14 - Sunday, March 16, 2025  
McWhorter Stadium • Clemson, S.C.

### THIS WEEK

#### • Friday, March 14

- Clemson vs. North Carolina: 6 p.m. | ACCNX

#### • Saturday, March 15

- Clemson vs. Duke: 1 p.m. | ACCNX

#### • Sunday, March 16

- Clemson vs. Duke: 1 p.m. | ACCNX

• **Where:** McWhorter Stadium | Clemson, S.C.

• **Live Stats** - [ClemsonTigers.com/softball/schedule](http://ClemsonTigers.com/softball/schedule)

• **Social Media** - [ClemsonSoftball](https://www.instagram.com/ClemsonSoftball)

### CLEMSON OVERVIEW

- Clemson is in its sixth season of competition and has made a postseason appearance in each year eligible.
- Clemson takes a .331 batting average into the conference opener. Clemson also has a .570 slugging percentage and .416 on-base percentage.
- Clemson's pitching staff holds a 2.67 ERA through 168.0 innings of work and has recorded 133 strikeouts.

### NORTH CAROLINA OVERVIEW

- North Carolina is led by head coach Megan Smith Lyon.
- This season, the Tar Heels hold a .375 average with a .555 slugging percentage and .450 on-base percentage.
- North Carolina has a 2.79 ERA with 131 strikeouts through 158.1 innings.
- Clemson leads the all-time series against the Tar Heels 11-0. The most recent meeting between the teams was a 9-1 Tiger win in five innings at McWhorter Stadium on March 17, 2024.
- North Carolina connections: 3B Alex Brown transferred in from Chapel Hill before the 2024 season.
- Clemson Head Coach John Rittman and North Carolina's Megan Smith Lyon coached

### ALL-TIME CLEMSON VS. NORTH CAROLINA

Date	Result	H/A/N	Score (CU-Opp)	Hits
4/1/21	W	H	4-1	9-2
4/2/21	W	H	6-1	10-3
4/2/21	W	H	12-1 (5)	11-2
4/3/21	W	H	9-1 (6)	13-4
4/1/22	W	A	12-4	13-6
4/2/22	W	A	7-0	7-4
4/3/22	W	A	12-4 (5)	9-9
5/11/23	W	N	2-1 (8)	4-3
3/15/24	W	H	5-0	8-5
3/16/24	W	H	4-1	5-6
3/17/24	W	H	9-1 (5)	12-8

### QUICK HITS

- Clemson has outscored opponents 184-83.
- The Tigers take a streak of 47 games where they have scored a run into the North Carolina series. This dates back to Boston College on March 30, 2024. The 47 games is a program record for consecutive games with a run scored.

### CONSECUTIVE GAMES WITH A RUN (TEAM)

Started	Date	Ended By	Date	No.
<i>Boston College</i>	3/20/24	ONGOING	N/A	47
UNCG	5/19/23	at Virginia	3/24/24	36
Virginia Tech	3/6/22	Notre Dame	4/15/22	25

Virginia Tech	2/19/21	Duke	3/26/21	19
Oklahoma State	5/27/23	Tennessee	2/25/23	15
Florida State	4/7/23	Duke	5/12/23	14
ETSU	4/27/22	Oklahoma State	5/26/22	10

- The Tigers totaled 229 hits through 26 games in 2025, including the freshman class contributing 82 of those hits and returners Maddie Moore (33) Alex Brown (31), Julia Knowler (31) and adding to the list.
- Clemson takes a 86 game hit streak into the Duke series that began during the UNCG matchup at regionals on May 19, 2023.

### CONSECUTIVE GAMES WITH A HIT (TEAM)

Started	Date	Ended By	Date	No.
St. John's	2/7/20	Notre Dame	4/15/22	122
UNCG	5/19/23	ONGOING		86
Notre Dame	4/16/22	Duke	5/12/23	69

- The Tigers return four starting position players including seniors Alex Brown (3B), Maddie Moore (2B) and Aby Vieira (C), as well as sophomore Julia Knowler (1B).
- Clemson brings in 10 newcomers, including three transfers (Reese Basinger - RHP, Jamison Brockenbrough - OF, and Brook Melnychuk - RHP), and seven freshman (Macey Cintron - RHP/1B, Marian Collins - INF, Riley Fennell - OF, Madi Lardizabal - INF, Sam Minish - OF, Taylor Pipkins - INF, and Ava Wilson - OF).

### WARM WELCOME

- Clemson welcomes back 13 former Tigers to McWhorter Stadium as a part of Alumni Weekend against North Carolina.
- Of the 13 making their return, two have gone on to play professionally.
- The players returning each played a vital role in the creation and the rise of Clemson Softball.
- Six of the returning alumni played with Coach Rittman in the inaugural season of the program that got cut short.
- Nine of them played on the team for its first full season in the spring of 2021.
- The 13 alumni are collectively responsible for:
  - 1,485 Games Played
  - 1,183 Games Started
  - 970 Hits
  - 140 Home Runs
  - 614 RBIs
  - 154 Stolen Bases

### TEAM ONE

- Valerie Cagle, Marissa Guimbarda, Alia Logoleo, Arielle Oda, Cammy Pereira, and Emma Whitfield all laced up their spikes the first season the Tigers took the field.
- Guimbarda played 134 games at Clemson, notably hitting four walk-offs in 2021.
- Oda returns to Clemson after a career that saw her play in the fourth most games of any Tiger, accruing 11 multi-hit games over her 214 games played.
- Pereira maintained a batting average of .292 over her three seasons in Orange and Regalia.
- Whitfield helped command the circle in the Tigers inaugural season, earning the W in Clemson's first ACC victory over Virginia in 2020.

### CLEMSON AT A GLANCE

<b>Overall Record:</b>	<b>18-8</b>
<b>ACC Record:</b>	1-2
<b>Home Record:</b>	14-2
<b>Away Record:</b>	0-1
<b>Neutral Record:</b>	4-5
<b>Streak:</b>	L2
<b>Last 5 Games:</b>	3-2
<b>Last 10 Games:</b>	8-2
<b>Day Record:</b>	15-8
<b>Night Record:</b>	3-0

### CLEMSON HISTORY

<b>All-Time:</b>	207-72
<b>All-Time ACC Record:</b>	82-33
<b>All-Time Record, Home:</b>	121-26
<b>All-Time Record, Away:</b>	51-26
<b>All-Time Record, Neutral:</b>	35-20

### HEAD COACH JOHN RITTMAN

<b>Sixth Season at Clemson:</b>	207-72
<b>24<sup>th</sup> Year Overall:</b>	957-423-3

### VS NORTH CAROLINA

<b>All-Time:</b>	11-0
<b>Under Rittman:</b>	11-0
<b>Last Clemson Win:</b>	3/17/24, Clemson 9, North Carolina 1 (5)
<b>Last Duke Win:</b>	N/A
<b>Streak:</b>	W11

\*Note: A full 2025 schedule is available on the second page

### HOME RUNS

#	Player <sup>(#)</sup>	Opponent (Date)	OB	Inn.	Outs
1.	Cintron <sup>(1)</sup>	vs. Ole Miss (2/6)	1	2	1
2.	Brockenbrough <sup>(1)</sup>	vs. Kansas (2/6)	0	1	1
3.	Knowler <sup>(1)</sup>	vs. Kansas (2/6)	0	1	1
4.	Knowler <sup>(2)</sup>	vs. Missouri State (2/9)	1	1	1
5.	Collins <sup>(1)</sup>	* vs. Missouri State (2/9)	0	7	0
6.	Ariail <sup>(1)</sup>	vs. Missouri State (2/9)	1	7	0
7.	Cintron <sup>(2)</sup>	vs. Missouri State (2/9)	1	7	2
8.	Wilson <sup>(1)</sup>	^ vs. No. 16 Missouri (2/13)	3	2	1
9.	Moore <sup>(1)</sup>	vs. No. 16 Missouri (2/13)	0	7	1
10.	Moore <sup>(2)</sup>	vs. Auburn (2/14)	0	1	1
11.	Cintron <sup>(3)</sup>	vs. No. 23 Kentucky (2/15)	1	1	2
12.	Knowler <sup>(3)</sup>	* vs. No. 23 Kentucky (2/15)	0	6	0
13.	Wilson <sup>(2)</sup>	vs. Ohio State (2/16)	2	1	2
14.	Moore <sup>(3)</sup>	* vs. Ohio State (2/16)	0	4	0
15.	Cintron <sup>(4)</sup>	vs. Ohio State (2/16)	0	4	1
16.	Knowler <sup>(4)</sup>	& vs. Ohio State (2/16)	2	6	0
17.	Cintron <sup>(5)</sup>	Charlotte (2/18)	1	3	1
18.	Brockenbrough <sup>(2)</sup>	Charlotte (2/18)	2	4	0
19.	Knowler <sup>(5)</sup>	Charlotte (2/18)	2	4	0
20.	Johnson <sup>(1)</sup>	\$ Charlotte (2/18)	1	4	0
21.	Wilson <sup>(5)</sup>	Marshall (2/22)	2	3	2
22.	Collins <sup>(2)</sup>	* Marshall (2/22)	0	6	0
23.	Wilson <sup>(4)</sup>	* Marshall (2/23)	0	3	0
24.	Knowler <sup>(6)</sup>	No. 10 Georgia (2/26)	0	3	1
25.	Knowler <sup>(7)</sup>	Lafayette (2/28)	2	2	0
26.	Moore <sup>(4)</sup>	Indiana (3/1)	1	2	2
27.	Wilson <sup>(6)</sup>	Indiana (3/2)	1	2	1
28.	Moore <sup>(5)</sup>	Indiana (3/2)	1	4	2
29.	Collins <sup>(3)</sup>	Furman (3/4)	2	3	0
30.	Whitesides <sup>(1)</sup>	Furman (3/4)	1	4	2
31.	Knowler <sup>(8)</sup>	Charleston Southern (3/5)	1	4	1
32.	Collins <sup>(4)</sup>	Charleston Southern (3/5)	0	5	2
33.	Brown <sup>(1)</sup>	^ Charleston Southern (3/5)	3	2	2
34.	Moore <sup>(6)</sup>	* Duke (3/8)	0	6	0
35.	Knowler <sup>(9)</sup>	Duke (3/8)	0	6	0
36.	Moore <sup>(7)</sup>	Duke (3/9)	0	4	1

\*Inning Leadoff HR; ^Grand Slam; &Walkoff; \$Pinch Hitter

Stats and notes are updated going into series only

# NOTES

## 2025 SCHEDULE

Date	Day	Opponent	Watch	Time/Result
2-6	Thu	\$ Ole Miss	FloCollege(\$)	L, 2-3
2-6	Thu	\$ Kansas	FloCollege(\$)	W, 4-3
2-7	Fri	\$ at FAU	FAUSports.com	L, 2-6
2-8	Sat	\$ Georgia State	FloCollege(\$)	W, 10-1 <sup>(6)</sup>
2-9	Sun	\$ Missouri State	FloCollege(\$)	W, 13-0
2-13	Thu	% No. 16/16 Missouri	ESPN2	L, 6-10
2-13	Thu	% Auburn	ESPN2	L, 3-6
2-14	Fri	% No. 23/24 Kentucky	ESPN2	L, 6-7
2-15	Sat	% UCF	ACC Network	L, 4-6 <sup>(8)</sup>
2-16	Sun	% Ohio State	ESPN	W, 11-3 <sup>(6)</sup>
2-18	Tue	Charlotte	ACCNX	W, 14-8
2-21	Fri	# Elon	ACCNX	W, 4-3
2-21	Fri	# Villanova	ACCNX	W, 1-0 <sup>(8)</sup>
2-22	Sat	# Marshall	ACCNX	W, 8-3
2-23	Sun	# Marshall	ACCNX	W, 8-0 <sup>(5)</sup>
2-26	Wed	No. 10/11 Georgia	ACCNX	W, 5-3
2-28	Fri	! Lafayette	ACCNX	W, 11-3 <sup>(6)</sup>
2-28	Fri	! East Carolina	ACCNX	W, 6-2
3-1	Sat	! Indiana	ACCNX	W, 11-5
3-2	Sun	! Indiana	ACCNX	W, 8-0 <sup>(5)</sup>
3-4	Tue	Furman	ACCNX	W, 12-0 <sup>(5)</sup>
3-5	Wed	Charleston Southern	ACCNX	W, 7-0
3-5	Wed	Charleston Southern	ACCNX	W, 12-0 <sup>(5)</sup>
3-7	Fri	* Duke	ACCNX	W, 12-4 <sup>(5)</sup>
3-8	Sat	* Duke	ACCNX	L, 3-5
3-9	Sun	* Duke	ACCNX	L, 1-2
3-14	Fri	* North Carolina	ACCNX	6 p.m.
3-15	Sat	* North Carolina	ACCNX	1 p.m.
3-16	Sun	* North Carolina	ACCNX	1 p.m.
3-19	Wed	at Fordham	ESPN+	3 p.m.
3-21	Fri	* at Syracuse		3 p.m.
3-22	Sat	* at Syracuse		1 p.m.
3-23	Sun	* at Syracuse		Noon
3-25	Tue	at South Carolina	SEC+	6 p.m.
3-28	Fri	* California	ACCNX	6 p.m.
3-29	Sat	* California	ACC Network	6 p.m.
3-30	Sun	* California	ACCNX	Noon
4-1	Tue	Gardner-Webb	ACCNX	6 p.m.
4-4	Fri	* at Stanford		9 p.m.
4-5	Sat	* at Stanford		5 p.m.
4-6	Sun	* at Stanford		3 p.m.
4-9	Wed	Winthrop	ACC Network	6 p.m.
4-11	Fri	* at NC State	ACC Network	8 p.m.
4-12	Sat	* at NC State	ACCNX	5 p.m.
4-13	Sun	* at NC State	ACCNX	1 p.m.
4-15	Tue	South Carolina	ACC Network	7 p.m.
4-17	Thu	* Boston College	ACCNX	6 p.m.
4-18	Fri	* Boston College	ACCNX	6 p.m.
4-19	Sat	* Boston College	ACCNX	Noon
4-22	Tue	at Tennessee		6 p.m.
4-25	Fri	* at Georgia Tech	ACCNX	6 p.m.
4-26	Sat	* at Georgia Tech	ACC Network	7 p.m.
4-27	Sun	* at Georgia Tech	ESPN2	Noon
5-7 - 5-10		^ ACC Championship		TBA
5-16 - 5-18		NCAA Regionals		TBA
5-23 - 5-25		NCAA Super Regionals		TBA
5-28 - 6-6		NCAA Women's College World Series		TBA

Note: Home games in **bold**; all times are Eastern

\* - ACC regular-season game

\$ - Paradise Classic (Boca Raton, Fla.)

% - Shriners Children's Clearwater Invitational (Clearwater, Fla.)

# - Clemson Classic (Clemson, S.C.)

! - Tiger Invitational (Clemson, S.C.)

^ - ACC Championship (Durham, N.C.)

## ADDITIONAL MEDIA RESOURCES

More information and a digital version of this set of game notes can be found by scanning the QR Code.



## TEAM TWO

- Casey Bigham, Ansley Houston, and Sarah Howell all donned the Paw in the Tigers' first full season on the diamond.
- Bigham notably walked off NC State on 4/25/21.
- Houston was an ace up Coach Rittman's sleeve, often coming in to pinch run. In her 77 appearances, she scored 26 runs.
- Howell most notably scored the game-winner against Georgia Tech in Clemson's first ACC road sweep.

## BEYOND

- Julia Bomhardt owns the fifth-most stolen bases in Clemson history in just two seasons on the team.
- Lindsey Garcia transferred in for the 2024 season and had a walkoff in extra innings in a February game vs. UConn.
- Grace Hiller was a two-time ACC Honor Roll selection.
- Sam Russ owns the longest stolen base streak in school history, swiping 32 bags without being caught.

## LEGENDS RETURN

- After graduating in 2024, Valerie Cagle and Alia Logoleo return to McWhorter to see the team they helped build.
- There are no words that can properly do either of their careers justice, and both have moved on from McWhorter Stadium to play professionally.
- Cagle and Logoleo are No. 1 and No. 2 in many sections of the Clemson record book. Both five-year players, the duo combined for 483 games played and 474 starts.

## PRO-GOLEO

- Logoleo amassed 195 hits, 40 home runs, and 172 RBIs in her time at McWhorter. She holds the career record for most assists (419) and double plays turned (48) to go along with the fourth most stolen bases in school history. In May 2024, she went on to become the fourth Tiger to play at the next level when she signed with the Chattanooga Steam.

## 1:1

- Cagle, Clemson's first two-way star, commanded both the circle and the batter's box for her entire tenure. A career .379 batting average combined with a career 1.72 ERA earned her four NFCA All-American nods, three of them being first-team. She holds numerous Clemson records including Games Played (243), Games Started (243), Batting Average (.379), At Bats (759), Hits (288), Doubles (49), Home Runs (66), RBIs (224), Slugging Percentage (.721), On-Base Percentage (.457), Walks (101), Total Bases (547), Appearances in the Circle (153), Starts in the Circle (114), Victories (86), Innings Pitched (756.1), Lowest Opponent Batting Average (.204), Strikeouts (819), Complete Games (79), Saves (14) and Solo Shutouts (28). If that wasn't enough, she then became the first Tiger to be drafted 1:1 in the Athletes Unlimited Pro Softball Draft in 2024.

## TO KNOWLER IS TO LOVE HER

- Julia Knowler stepped onto the collegiate scene with a splash in 2024 and hasn't looked back.
- The sophomore has a .352 average clocking 31 hits - 20 of which have been for extra bases.
- She leads the program with nine home runs, which is second in the ACC and 20th in the country as of March 12.
- Through 26 games this season, Knowler has contributed 11 doubles to tie for fifth-most in a single season by a Tiger.
- The 11 doubles leads the ACC and is fourth in the NCAA. Her four sac flies are third in the conference

and 34 RBIs in her 26 starts.

- As a freshman, her first collegiate game in 2024 saw Knowler going 3-for-4 with four RBIs and three runs scored. Her hits included a solo home run in her first plate appearance and a two-run shot out of dead center (vs. Missouri State).
- Knowler went on to contribute two hits and two RBIs in the 3-2 victory against Indiana, as well as two hits and one RBI between the Liberty and Oregon games. Both of her hits vs. Liberty and Oregon resulted in the pinch runner scoring.
- Knowler finished her freshman campaign with a .273 average, .500 slugging percentage and .370 on-base percentage. She also added six multi-hit games and nine multi-RBI games.
- She missed 20 games in 2024 due to a non-orthopedic surgery.
- Before Clemson, she was the Florida Gatorade Player of the Year in 2021.

## SHE'S GIVING MOORE

- Senior infielder Maddie Moore has come into her own over the last three seasons.
- The Loomis, Calif., native is the lone all-american returning to the Clemson lineup after garnering third team honors at second base following the 2024 season.
- Seeing time throughout her career at second base, third base and shortstop, she leads returners with 192 career starts and 194 career appearances.
- Defensively, she has clocked 244 putouts and 336 assists. Her 336 assists sits second all-time at Clemson trailing only Alia Logoleo (417).
- She sits second for career double-plays turned with 35 - trailing only Logoleo (38).
- At the plate, Moore has significantly improved during her time in the Orange and Regalia. As a freshman, she maintained a .190 average in comparison to her team-leading .368 average in 2024. Through the Duke series, she is batting a conference-leading .500 through 66 at bats.
- Additional increases came in the form of total hits (2021 - 19 vs. 2024 - 38 - 33 in 2025) and walks (2021 - 13 vs. 2024 - 29 - 10 in 2025) to result in a .184 on-base percentage increase (.293 to .477 - has a .571 in 2025).
- Earlier in 2025, Moore set the longest reached base streak in Clemson Softball history with 29. It began on March 28, 2024 against Virginia and was snapped vs. Villanova on February 21, 2025.
- This is the longest reached base streak by a Tiger, and surpassed Valerie Cagle's 25 games in 2021.

## BASE THIEVES

- Not only is senior Maddie Moore smart at the plate, but she has been able to lead the Tigers by stealing 42 bases over the course of her career.
- The senior was a perfect 10-for-10 during her freshman campaign and has gone on to steal an additional 15 bases in both her sophomore and junior seasons, and is 2-2 so far in 2025.
- With 42 career stolen bases, Moore sits third all-time at Clemson trailing only McKenzie Clark (46) and Carlee Shannon (45).
- Joining Moore on the top-10 list is sophomore Kylee Johnson.
- Johnson stole 11 bases during her freshman campaign on 13 attempts. She has stolen four in 2025.
- Her 11-consecutive stolen bases dating from Feb. 14, 2024 to April 9, 2024 is tied for the eighth longest streak in Clemson softball history.
- See the complete Top 10 Career Stolen Bases list below:

# NOTES

## TOP 10 - CAREER STOLEN BASES

Player	Years	Total
McKenzie Clark	2021-24	46
Carlee Shannon	2020-22	45
<b>Maddie Moore</b>	<b>2022-Pres.</b>	<b>42</b>
Alia Logoleo	2020-24	32
Julia Bomhardt	2023-24	31
Sam Russ	2022	29
Arielle Oda	2020-24	25
Ally Miklesh	2023	18
<b>Kylee Johnson</b>	<b>2024-Pres.</b>	<b>15</b>
Ansley Gilstrap	2020-21	13
Valerie Cagle	2020-24	11

- Additional Tigers with stolen bases on the 2025 roster: Alex Brown (23 total - 11 at Clemson), Aby Vieira (5 total), Jamison Brockenbrough (7 total - 4 at Clemson), Reese Basinger (1 total - 0 at Clemson), Ava Wilson (2 total).

## BOTTLE OF CINTRON

- Freshman Macey Cintron has struck Clemson's lineup in a powerful way since game one.
- Becoming the second freshman in as many years to hit a lead off home run in her first collegiate at bat, Cintron continues to push Clemson's offensive prowess.
- The Cumming, Ga., native has taken over the cleanup spot in the lineup following the powerhouses of Maddie Moore and Julia Knowler to hold an even .300 average after the Duke series, including a .557 slugging percentage and .409 on-base percentage.
- She has five home runs and 20 RBIs through her first 25 games.
- In 25 games, she has cracked Clemson's Freshman Top 5 Home Run list alongside fellow freshman Ava Wilson (full list below) and Top 5 RBI list (see below).

## FRESHMAN HOME RUN LEADERS

Player	Year	Total
Valerie Cagle*	2021	17^
McKenzie Clark	2021	9
Alia Logoleo*	2021	8
Julia Knowler	2024	5
Aby Vieira	2022	5
<b>Macey Cintron</b>	<b>2025</b>	<b>5</b>
<b>Ava Wilson</b>	<b>2025</b>	<b>5</b>

\*Redshirt; ^Led the team that season

## FRESHMAN RBI LEADERS

Player	Year	Total
Valerie Cagle*	2021	45^
Alia Logoleo*	2021	32
McKenzie Clark	2021	29
Julia Knowler	2024	28
<b>Macey Cintron</b>	<b>2025</b>	<b>20</b>
<b>Ava Wilson</b>	<b>2025</b>	<b>19</b>
Kyah Keller*	2021	17
Abi Stuart*	2021	17
Aby Vieira	2022	17

\*Redshirt; ^Led the team that season

## FRESH FACES

- All seven freshmen on the 2025 roster have made at least one appearance during the 2025 season.
- Macey Cintron, Marian Collins, Sam Minish, Taylor Pipkins and Ava Wilson have started in at least six games, with Cintron, Wilson and Collins starting over 20 games each.
- Riley Fennell (13) and Madi Lardizabal (3) appeared as either a pinch hitter or pinch runner in a contest with Fennell starting in one.
- During opening weekend, the freshman class provided production at the plate for the Tigers clocking 18 of

the team's 40 total hits and 15 of the 27 total RBIs.

- In total, 14 of Clemson's 36 home runs have come off the bat of a freshman, including Wilson hitting the first grand slam of the 2025 season against No. 16 Missouri.
- Freshmen have shown awareness at the plate far beyond their age, accounting for 42 of the team's 80 total walks.
- Cintron and Wilson have provided poise and power to the Clemson lineup. Defensively, Cintron has earned five wins in the circle and Collins has provided an effortless feel to shortstop amongst an experienced infield.

## FRESHMAN CONTRIBUTIONS

Player	Team Total	Freshman Total	Pct.
At Bats	691	257	.372
Runs	184	64	.348
Hits	229	82	.358
Doubles	47	14	.298
Triples	5	2	.400
Home Runs	36	14	.389
RBIs	166	63	.380
Total Bases	394	142	.360
Walks	80	42	.467
Hit By Pitch	20	10	.500

## BROWNIE POINTS

- Senior Alex Brown joined the Clemson roster prior to the 2024 season after transferring from North Carolina.
- Starting in all 26 games at either third base or in the outfield and in the lead off spot in the 2025 season, she has clocked a .365 average with 31 hits, a .518 slugging percentage, a .465 on-base percentage and seven stolen bases.
- The senior tied her career high with four hits in a single game against Missouri State on Feb. 9.
- She clocked her first career grand slam in the second inning against Charleston Southern on March 5 becoming the second Tiger in 2025 to hit a grand slam.
- During her time at Clemson, she has started in 80 games at either second, third, shortstop or the outfield to become a true utility for the Tigers.
- From February 13 to March 9, Brown reached base in 19 straight games, the fifth longest streak in Clemson history.

## TOP 10 - REACHED BASE STREAK

Player	Start	End	No.
<b>Maddie Moore</b>	<b>3/28/24</b>	<b>2/21/25</b>	<b>29</b>
Valerie Cagle	3/27/21	5/22/21	25
Valerie Cagle	3/8/24	5/17/24	21
Marissa Guimbarda	2/9/20	3/7/20	21
McKenzie Clark	3/18/22	4/21/22	20
<b>Alex Brown</b>	<b>2/13/25</b>	<b>3/9/25</b>	<b>19</b>
Valerie Cagle	5/19/23	2/25/24	18
McKenzie Clark	3/16/24	4/16/24	17
Maddie Moore	3/8/23	4/6/23	17
Marissa Guimbarda	4/16/21	5/22/21	17
McKenzie Clark	4/3/21	5/14/21	17

- From February 22 to March 7, Brown also scored in 10 straight games, a school record.

## TOP 10 - RUN SCORED STREAK

Player	Start	End	No.
<b>Alex Brown</b>	<b>2/23/25</b>	<b>3/7/25</b>	<b>10</b>
Alex Brown	3/7/24	3/20/24	8
McKenzie Clark	2/11/23	2/23/23	8
Ansley Gilstrap	4/2/21	4/18/21	8
Valerie Cagle	3/19/23	4/2/23	7
Valerie Cagle	2/14/23	2/24/23	7
Valerie Cagle	2/22/20	3/4/20	7
Ally Miklesh	4/11/23	4/22/23	6
Valerie Cagle	4/17/21	4/25/21	6
Cammy Pereira	3/4/20	2/12/21	6

## TIGER TIDBITS

Category	Record
Record	18-8
ACC Record	1-2
Non-Conference Record	17-6
Versus Top 25 (NFCA)	2-4
Versus Top 10 (NFCA)	0-0
Versus Top 5 (NFCA)	0-0
In February	12-6
In March	6-2
In April	0-0
In May	0-0
On Monday	0-0
On Tuesday	2-0
On Wednesday	3-0
On Thursday	1-3
On Friday	5-2
On Saturday	3-2
On Sunday	4-1
In Day Games	15-8
In Night Games	3-0
In 1-Run Games	3-3
In 2-Run Games	1-2
In 5+ Run Games	13-0
After a Loss	3-4
After a Win	15-3
In Extra Innings	1-1
Shutouts	7-0
Scoring First	11-4
Scoring in the 1st Innings	10-3
Leading After 4	16-0
Trailing After 4	0-7
Tied After 4	2-1
Leading After 5	11-0
Trailing After 5	1-6
Tied After 5	2-2
Leading After 6	9-0
Trailing After 6	0-6
Tied After 6	1-2
Scoring 5 or More Runs	15-2
Allowing 5 or More	2-6
Out-hit opponent	16-0
Opponent out-hit	0-7
Hits are equal	2-1
Make 0 errors	7-3
Make 1 error	8-3
Make 2+ error	3-2
Opp. makes 0 errors	6-4
Opp. makes 1 error	7-3
Opp. makes 2+ errors	5-1

## QUICK FACTS

Nickname	Tigers
Location	Clemson, S.C. 29633
Colors	Tiger Orange & Regalia
Founded	1889
Enrollment	28,747
President	Dr. James P. Clements (Maryland-Baltimore County '85)
Director of Athletics	Graham Neff (Georgia Tech '06)
Conference	Atlantic Coast Conference
Facility (Capacity)	McWhorter Stadium (2,116)
Year Opened	2020
Dimensions	LF - 200, CF - 220, RF - 205
Record Crowd	2,116
Head Coach	John Rittman (New Mexico State '86)
Record at Clemson	207-72 (6th season)
Overall Record	957-423-3 (24 <sup>th</sup> season)
Associate Head Coach	Kyle Jamieson (Brock '97, Nipissing '98)
Assistant Coach	Katie "Crash" Repole (Louisiana '16)
Assistant Coach	Ryan Wieligman (Henderson State '20)
Dir. of Player Development	Jessie Harper (Arizona '20, '22)
Dir. of Operations	Jeannie Murphy (Oklahoma '10, Concordia '14)
Graduate Assistant	Taylor Roby (Louisville '23)
Graduate Assistant	Kelly Torres (Duke '24)
Athletic Trainer	Katie Rovtar (Toledo '06 & Virginia Tech '08)
First Year of Softball	2020
Season of Softball (Including 2024)	6

# NOTES

## IN THE CIRCLE

- The Clemson Tigers return only two pitchers from the 2024 staff in senior Brooke McCubbin and sophomore Olivia Duncan.
- McCubbin has 25 victories on her career and a 2.28 ERA through 227.0 innings with 141 strikeouts.
- During her time in the Orange and Regalia, she has allowed only 49 extra-base hits (25 doubles, 4 triples, 20 home runs) and limited opponents to a .233 average.
- She earned her first top 25 victory with a win against Georgia on Feb. 26, 2025.
- The senior followed that with five innings of work against Charleston Southern where she allowed only one hit without giving up any walks.
- Looking to bolster the pitching staff, Clemson picked up two transfers from the portal in Reese Basinger and Brook Melynchuk.
- Basinger, an Evans, Ga., native, held a 2.33 career ERA in three seasons of work at Winthrop with 477 strikeouts through 511.1 innings of work.
- She's made 17 appearances in 2025 and struck out a season-high nine against Ohio State in relief with solo shutouts against both Marshall and Villanova.
- With four strikeouts against Charlotte, Basinger surpassed 500 career strikeouts.

## TEAM SUPERLATIVES

<b>OFFENSE</b>	
At bats	39 - vs. Missouri State (2/9)
Runs scored	14 - Charlotte (2/18)
Hits	17 - 2 times
RBI	13 - 2 times
Doubles	5 - 3 times
Triples	1 - 5 times
Home runs	4 - 3 times
Walks	9 - Charleston Southern (3/5)
Strikeouts	12 - at FAU (2/7)
Sac flies	3 - 2 times
Stolen bases	2 - 3 times
Hit by pitch	3 - 3 times
<b>FIELDING</b>	
Putouts	24 - 2 times
Assists	14 - vs. UCF (2/15)
Errors	3 - 2 times
DPs turned	1 - 8 times
<b>PITCHING</b>	
Innings pitched	8.0 - 2 times
Runs allowed	10 - vs. Missouri (2/13)
Earned runs	8 - vs. Missouri (2/13)
Walks allowed	6 - Villanova (2/21)
Strikeouts	10 - 3 times
Hits allowed	12 - vs. UCF (2/15)

## PLAYER SUPERLATIVES

<b>OFFENSE</b>	
At bats	5 - 4 times
Runs scored	4 - Alex Brown, vs. Missouri State (2/9)
Hits	4 - 3 times
RBI	5 - 3 times
Doubles	2 - 6 times
Triples	1 - 5 times
Home runs	1 - 36 times
Walks	3 - Alex Brown, vs. Charleston Southern (3/5)
Strikeouts	3 - Kylee Johnson, at FAU (2/7)
Sac flies	2 - Julia Knowler, vs. Ohio State (2/16)
Stolen bases	1 - 22 times
Hit by pitch	1 - 20 times
<b>FIELDING</b>	
Putouts	12 - Julia Knowler, vs. Charleston Southern (3/5)
Assists	7 - Taylor Pipkins, vs. UCF (2/15)
Errors	2 - 2 times
<b>PITCHING</b>	
Innings pitched	8.0 - Reese Basinger, Villanova (2/21)
Runs allowed	7 - Brooke McCubbin, Charlotte (2/18)
Earned runs	6 - Brooke McCubbin, vs. Auburn (2/13)
Walks allowed	6 - Reese Basinger, Villanova (2/21)
Strikeouts	10 - Macey Cintron, Elon (2/21)
Hits allowed	12 - Brooke McCubbin vs. UCF (2/15)

- Melynchuk (or "Chuk" amongst the team) comes to Clemson after two years at Louisiana Tech where she posted a 2.49 ERA through 199.2 innings with 94 strikeouts.
- The Hudson Bay, Canada native started at Iowa Western Community College where she garnered ICCAC Pitcher of the Year and Second Team NJCAA All-American honors in 2021.
- The final addition came in freshman Macey Cintron, who represented the Puerto Rico Junior Olympic National Team, including pitching for the Puerto Rico JNT at the WBSC U-19 Women's Softball World Cup at 13-years-old.
- Cintron has made 12 appearances in the circle and holds a 5-2 record with 29 strikeouts through 34.1 innings.

## MADNESS IN McWHORTER

- The Clemson community latched onto the softball program as soon as the sport was announced as an addition in 2017.
- With an original capacity of 1,616 for the 2020-22 seasons, Clemson expanded the outfield berm seating in the summer of 2022 to move the capacity to 2,116.
- For the previous two seasons, Clemson has average over 1,500 fans, including 1,877 during the 2024 home slate.
- In 2025, Clemson has averaged 1,492 fans for its 13 total home games.
- With 48,809 fans entering McWhorter Stadium in 2024, Clemson finished 13th nationally and led the ACC in overall attendance. The Tigers' average attendance also led the ACC and ranked seventh nationally.
- Clemson has ranked in the top 10 in either overall attendance and/or average attendance in 2020, 2022, 2023 and 2024. \*Note that in 2021, Clemson had attendance restrictions coming off the COVID-19 Pandemic.

## MISCELLANEOUS VICTORIES

- In only its sixth year of competition, Clemson has racked up numerous run-rule victories and winning streaks that have become noteworthy in the record book.
- When it comes to run-rules, the Tigers have amassed 67, including 12 in 2024 and eight in 2025.
- The largest margin of victory in a run-rule came back in the inaugural season against Maryland inside McWhorter Stadium (then the Clemson Softball Stadium). Clemson claimed a 21-2 win on Feb. 15, 2020 for a 19-run margin.
- In 2025, Clemson's largest margin of victory came against Missouri State after Clemson recorded six runs in the top of the seventh to take the game 13-0, and the largest run-rule game against both Furman (12-0) and Charleston Southern (12-0).

## 2025 RUN-RULE VICTORIES

Date	Opponent	Innings	Score
2/8/25	vs. Georgia State	6	10-0
2/16/25	vs. Ohio State	6	11-3
2/23/25	Marshall	5	8-0
2/28/25	Lafayette	6	11-3
3/2/25	Indiana	6	8-0
3/4/25	Furman	5	12-0
3/5/25	Charleston Southern	5	12-0
3/7/25	Duke	5	12-4

## TIGERS IN THE PROS

- In only five seasons (four complete seasons) Clemson has continued to develop and produce Tigers on the professional level.
- Since 2021, Clemson has had six players participate

in two different pro leagues between Athletes Unlimited (3) and the Women's Professional Fastpitch Organization (3).

- The first pro player to dawn the Orange and Regalia was Ansley Gilstrap (2021) when she played for the Florida Vibe.
- Graduate transfer Caroline Jacobsen (2023) became the first Clemson Softball player drafted after being the 20th pick in the 2023 WPF draft by USSSA. She went on to play the previous two seasons with Athletes Unlimited.
- Continuing the draft momentum, Valerie Cagle (2024) became the first Clemson female student athlete to be selected No. 1 overall after being drafted by Athletes Unlimited in 2024.
- Joining Jacobsen and Cagle within the AU organization was outfielder McKenzie Clark (2024) who played in both their AUX Pro Season in Kansas and the AU Pro Softball Championship Season in Illinois.
- Jacobsen (Talons - 38th pick) and Clark (Volts - 42nd pick) continued to make Clemson history by being selected in the inaugural Athletes Unlimited Softball League (AUSL) draft.
- Alia Logoleo (2024 - Chattanooga Steam) and Ally Miklesh (2024 - Florida Vibe) round out the Tigers that have turned pro during head coach John Rittman's tenure.

## LAST TIME..

<b>OFFENSE</b>	
Hit two HRs in a game	Kylee Johnson (North Carolina, 3/16/24)
Hit three HRs in a game	McKenzie Clark (at Florida State, 4/22/22)
Hit grand slam	Alex Brown (Charleston Southern, 3/5/25)
Leadoff HR (inning)	Maddie Moore (Duke, 3/8/25)
Walkoff HR	McKenzie Clark (Minnesota, 3/7/24)
Walkoff HR (run rule)	Julia Knowler (6th vs. Ohio State, 2/16/25)
Pinch-hit HR	Haylee Whitesides (Furman, 3/4/25)
Inside the Park HR	McKenzie Clark (Akron, 2/26/22)
HR in back-to-back games	Maddie Moore (Duke, 3/8/25 & 3/9/25)
Back-to-back HRs	Maddie Moore & Julia Knowler (Duke, 3/8/25)
Two doubles in a game	Marian Collins (Duke, 3/7/25)
Three doubles in a game	N/A
Two triples in a game	N/A
Hit for the cycle	N/A
Four hits in a game	Aby Vieira (Indiana, 3/1/25)
Drove in five runs	Julia Knowler (Lafayette, 2/28/25)
Drove in six runs	Valerie Cagle (at FGCU, 2/10/22)
Drove in seven runs	Jolo Hyatt (vs. Georgia State, 2/11/23)
Drove in eight runs	Valerie Cagle (Miami (OH), 2/24/24)
Drove in 10 runs	Alia Logoleo (at Syracuse, 5/9/21)
Scored four runs	Alex Brown (vs. Missouri State, 2/9/25)
Walkoff hit (non-HR)	Julia Knowler (Indiana, 3/2/25 -- single)
Walkoff (non-hit)	Alia Logoleo (Gardner-Webb, 3/13/24 -- error)
Walkoff (pinch hitter)	Kyah Keller (Liberty, 3/13/22 -- single)
<b>PITCHING</b>	
Threw a no-hitter	Valerie Cagle (5.0 IP, Mercer, 3/8/23)
Threw a combined no-hitter	Regan Spencer & Millie Thompson (5.0 IP, vs. Kent State, 2/11/22)
Threw a perfect game	Valerie Cagle (5.0 IP, Mercer, 3/8/23)
Threw a solo shutout	Brooke McCubbin (6.0 IP, Indiana 3/2/25)
Had 14 strikeouts	Valerie Cagle (Georgia Tech, 5/13/21)
Had 13 strikeouts	Valerie Cagle (vs. Tennessee, 2/18/22)
Had 12 strikeouts	Valerie Cagle (vs. North Carolina, 5/11/23)
Had 11 strikeouts	Valerie Cagle (at FIU, 2/12/23)
Had 10 strikeouts	Macey Cintron (Elon, 2/21/25)
Pitched >7 innings	Reese Basinger (8.0 IP, Villanova, 2/21/25)
<b>TEAM</b>	
Won 10 straight games	2025 (15: Feb. 16 - March 9, 2025)
Won 15 straight games	2025 (15: Feb. 16 - March 9, 2025)
Won 20 straight games	2023 (23: Feb. 26 - Apr. 5, 2023)
Extra-Innings victory	2/21/25, Clemson 1, Villanova 0 (8 Inn.)
Extra-Innings loss	2/15/25, Clemson 4, UCF 6 (8 Inn.)
Played 12 innings	3/20/24, No. 11 Clemson 4, No. 23 South Carolina 6
Played 11 innings	3/19/21, No. 23 Clemson 4, at Louisville 0
Played 10 innings	5/10/24, No. 23 Clemson 3, No. 5 Duke 4
Played nine innings	3/7/24, No. 10 Clemson 3, Minnesota 5
Played eight innings	2/21/25, Clemson 1, Villanova 0
Was no-hit	5/12/23, No. 10 Clemson 0, No. 6 Duke 2
Was shut out	3/29/24, No. 16 Clemson 0, Boston College 4
Beat a ranked opp.	3/7/25, Clemson 12, No. 14 Duke 4 (5 Inn.)
Beat a top-10 opp.	2/26/25, Clemson 5, No. 10 Georgia 3
Beat top-10 ACC opp.	5/13/22, No. 15 Clemson 4, No. 2 Virginia Tech 1
Run-ruled a ranked opp.	3/7/25, Clemson 12, No. 14 Duke 4 (5 Inn.)

# ROSTER / ACC STANDINGS / HONORS

## NUMERICAL

#	Player	Pos.	B/T	Yr.	Ht.	Hometown	Previous School / High School
1	Kennedy Ariail	OF	R/R	So.	5-6	Cumming, Ga.	South Forsyth HS
2	Brooke McCubbin	RHP	R/R	Sr.	5-10	Locust Grove, Ga.	Locust Grove HS
3	Kylee Johnson	OF/INF	R/R	So.	5-8	Wesley Chapel, Fla.	Wiregrass Ranch HS
4	Aby Vieira	C/UTL	L/R	Sr.	5-9	Mission Viejo, Calif.	Mission Viejo HS
5	Marian Collins	INF	L/R	Fr.	5-11	Marietta, Ga.	Mount Paran Christian School
7	Reese Basinger	RHP	L/R	Sr.	5-11	Evans, Ga.	Winthrop / Evans HS
8	Madi Lardizabal	INF	R/R	Fr.	5-8	Murrieta, Calif.	Murrieta Mesa HS
9	Jamison Brockenbrough	OF	L/R	Jr.	5-8	Locust Grove, Ga.	Tennessee / Locust Grove HS
10	Riley Burton	C/UTL	R/R	So.	5-11	Lancaster, S.C.	Legion Collegiate Academy
11	Haylee Whitesides	INF	R/R	*Jr.	5-5	Duncan, S.C.	Byrnes HS
12	Julia Knowler	INF	L/R	So.	5-9	Fort Myers, Fla.	Fort Myers HS
13	Abi Stuart	C/UTL	R/R	**Sr.	5-9	Snow Camp, N.C.	Southern Alamance HS
16	Macey Cintron	RHP/1B	R/R	Fr.	5-11	Cumming, Ga.	Wesleyan School
17	Ava Wilson	OF	L/R	Fr.	5-9	Acworth, Ga.	North Paulding HS
19	Brook Melnychuk	RHP	R/R	Gr.	5-5	Hudson Bay, Canada	LA Tech / Hudson Bay Community School
20	Sam Minish	OF/C	L/L	Fr.	5-6	Hull, Ga.	Madison County HS
21	Jadeyn Ruszkowski	OF	L/L	*Jr.	5-8	Lithia, Fla.	Newsome HS
22	Taylor Pipkins	INF	R/R	Fr.	5-6	Cumming, Ga.	North Forsyth HS
25	Alex Brown	INF	L/R	Sr.	5-7	Savannah, Ga.	North Carolina / South Effingham HS
27	Riley Fennell	OF	R/R	Fr.	5-8	Oviedo, Fla.	Oviedo HS
28	Maddie Moore	INF	R/R	Sr.	5-7	Loomis, Calif.	Del Oro HS
44	Olivia Duncan	LHP	R/L	So.	5-10	Buford, Ga.	Buford HS

\* - one redshirt; Note: "Gr." denotes senior unless otherwise noted.

### Head Coach:

John Rittman (6th season • New Mexico State '86)

### Associate Head Coach:

Kyle Jamieson (6th season • Brock University '97, Nipissing University '98)

### Assistant Coach/Recruiting Coordinator:

Katie "Crash" Repole (1st season • Louisiana '16)

### Assistant Coach/Technology:

Ryan Wielgman (1st season • Henderson State '20)

### Director of Operations:

Jeannie Murphy (6th season • University of Oklahoma '10, Concordia University Irvine '14)

### Director of Player Development:

Jessie Harper (3rd season • University of Arizona '20, '22)

### Graduate Assistants:

Taylor Roby (2nd Season • Louisville '23)

Kelly Torres (1st Season • Duke '24)

### Athletic Trainer:

Katie Rovtar (6th season • Toledo '06, Virginia Tech '08)

### Strength & Conditioning Coach:

Erika Troutman (1st season • Liberty '17, Clemson '20)

### Student Managers:

Mac McLaughlin (3rd Season)

Kayleigh Doerflein (2nd Season)

Joe Van Hoy (1st Season)

## ALPHABETICAL

#	Player	Pos.	Cl.
1	Kennedy Ariail	OF	So.
7	Reese Basinger	RHP	Gr.
9	Jamison Brockenbrough	OF	Jr.
25	Alex Brown	INF	Sr.
10	Riley Burton	C/UTL	So.
16	Macey Cintron	RHP/1B	Fr.
5	Marian Collins	INF	Fr.
44	Olivia Duncan	LHP	So.
27	Riley Fennell	OF	Fr.
3	Kylee Johnson	OF/INF	So.
12	Julia Knowler	INF	So.
8	Madi Lardizabal	INF	Fr.
2	Brooke McCubbin	RHP	Sr.
19	Brook Melnychuk	RHP	Gr.
20	Sam Minish	OF/C	Fr.
28	Maddie Moore	INF	Sr.
22	Taylor Pipkins	INF	Fr.
21	Jadeyn Ruszkowski	OF	*Jr.
13	Abi Stuart	C/UTL	**Sr.
4	Aby Vieira	C/UTL	Sr.
11	Haylee Whitesides	INF	*Jr.
17	Ava Wilson	OF	Fr.

## PRONUNCIATIONS

#	Name	Pronunciation
1	Kennedy <b>Ariail</b>	Ariail
4	Aby <b>Vieira</b>	vee-AIR-uh
7	Reese <b>Basinger</b>	BAY-sing-er
8	Madi <b>Lardizabal</b>	lar-dih-ZAH-bowl
9	Jamison <b>Brockenbrough</b>	brock-IN-bro
16	Macey <b>Cintron</b>	SIN-tron
19	Brook <b>Melnichuk</b>	MEL-lynn-chuck
20	Sam <b>Minish</b>	MIN-ish
21	Jadeyn <b>Ruszkowski</b>	russ-COW-ski
	Katie <b>Repole</b>	rep-LEE
	Ryan <b>Wielgman</b>	wah-LIG-man



Hear the roster pronunciations by scanning the QR code

## HONORS

### #2 BROOKE MCCUBBIN • RHP • SR.

- NFCA Selected Top Performance (2/25-3/2)

### #5 MARIAN COLLINS • INF • FR.

- D1Softball D100 Preseason Freshman Watch List
- Softball America Preseason Freshman Watch List

### #7 REESE BASINGER • RHP • SR.

- NFCA Selected Top Performance (3/4-3/9)
- NFCA Selected Top Performance (2/18-2/23)

### #12 JULIA KNOWLER • INF • SO.

- #4 on D1Softball First Base Player Power Rankings (Week 4)
- #5 on Softball America First Baseman Rankings (March)

### #20 SAM MINISH • OF • FR.

- D1Softball D100 Preseason Freshman Watch List
- Softball America Preseason Freshman Watch List

## HONORS

### #25 ALEX BROWN • INF • SR.

- #9 on D1Softball Preseason UT/DP Player Rankings
- #72 on Softball America Preseason Top 100

### #28 MADDIE MOORE • INF • SR.

- ACC Player of the Week (March 11)
- NFCA Selected Top Performance (3/4-3/9)
- NCAA Softball Starting Lineup of the Week (3/4-3/9)
- NFCA Selected Top Performance (2/25-3/2)
- #3 on Softball America Second Baseman Rankings (March)
- NCAA Softball Starting Lineup of the Week (2/13-2/16)
- NFCA Top Selected Performance (2/13-2/16)
- D1 Softball Clearwater Invitational All-Tournament Team
- Preseason All-ACC
- Softball America Preseason Second Team All-American
- #2 on D1Softball Preseason Second Baseman Rankings
- #31 on Softball America Preseason Top 100
- #34 on D1Softball D100 Preseason Player Rankings

## MEDIA SERVICES

### CLEMSON ATHLETIC COMMUNICATIONS

Contact	Valerie Johnson (Central Michigan '18)
Email	vjohns4@clemson.edu
Cell Phone	712-269-4149
Ticket Office Phone	1-800-CLEMSON
Website	ClemsonTigers.com
Social Media	ClemsonSoftball

### ACC MEDIA RELATIONS

Bailey Grossetti is the softball athletic communications contact for the ACC and can be reached at bgrossetti@acc.org.

### CREDENTIALS

Members of the working press who desire a media credential to a Clemson softball home game ClemsonTigers.com/2025-clemson-softball-media-resources/. There is limited space for writers inside McWhorter Stadium. Members of the media must request a pass at least 24 hours prior to each game to be considered for admittance. Additional resources (game notes and box scores) can be found on that page as well.

### WEBSITE & SOCIAL MEDIA

Up-to-date stats, notes, stories and box scores can be found on Clemson's official website (ClemsonTigers.com). Live online video, live audio and live stats can be accessed on the ClemsonTigers.com softball schedule page. Fans can also follow ClemsonSoftball on X, Instagram and Facebook.

# HEAD COACH JOHN RITTMAN



John Rittman, a longtime head coach and member of the USA Softball Women's National Team coaching pool, was named the first Head Coach of Clemson Softball on Nov. 3, 2017. Rittman came to Clemson after serving as the Associate Head Coach at the University of Kansas from 2015-17. Rittman joined the Jayhawks after 18 seasons as the Head Coach at Stanford University and 10 years on the United States National Team coaching staff (2001-08, 2016-18). He returned to the USA Women's National Team staff in 2023 when he served as the head coach for the Japan All-Star Series.

The 2024 campaign had Rittman leading the Tigers to a 35-19 overall record. As a program, Clemson opened the season with its 200th game in history (held a 155-45 overall record at this time) that was eclipsed with a 12-0 run-rule against Missouri State. The Tigers also reached their 100th victory in program history at McWhorter Stadium with a 12-0 shutout against Fordham. Rittman continued to show his excellence at the helm of the program by guiding a program-record number of student-athletes to postseason honors, including two NFCA All-Americans, three NFCA All-Region selections and six All-ACC honorees. Most notable on this list is Rittman's guidance of pitcher/utility Valerie Cagle, who was crowned a First Team All-American for the third time of her tenure, as well as being a First Team NFCA All-Southeast selection and earning All-ACC Third Team honors. Cagle was joined by first-time All-American infielder Maddie Moore, who posted a team-high .368 average after contributing 10 home runs, eight doubles and two triples to the Tiger offense. Moore was joined on the All-ACC First Team by infielder Alia Logoleo, who clocked a .319 average, while fellow infielder Alex Brown garnered Second Team accolades with a .328 average. As a team, the Tigers set single-season records in triples (15), sac flies (25) and sac hits (18). Additionally, Clemson's pitching staff finished with a 2.32 ERA, ranked No. 24 in the NCAA at the end of the year, while the 3.72 strikeout-to-walk ratio ended the year at No. 8. For the second-consecutive season, the Clemson pitching staff allowed only 56 extra-base hits while holding opponents to a .245 batting average behind the efforts of All-ACC selections Regan Spencer (Second Team), Millie Thompson (Third Team) and Cagle. Senior center fielder McKenzie Clark rounded out the All-ACC and NFCA All-Region honorees with a .365 average following 10 home runs, eight doubles and four triples. Clemson capped its season with its fourth-straight NCAA Regional appearance where the Tigers won their ninth NCAA Tournament game with an 8-0 run-rule against USC Upstate.

During the fourth season at the helm of the program, Rittman guided the Tigers to a 49-12 overall record that started with a perfect 14-0 run to open the season before the Tigers posted a 37-1 record through the first week of April for another program best. Clemson capped the regular season with a 5-4 victory to mark the 150th of the program and Rittman's 900th-win of his coaching tenure. He became the 44th collegiate softball coach to reach the 900-win benchmark. Hosting the second regional in program history, Clemson went on to defeat UNCG and Auburn to make the second-consecutive super regional appearance. The Tigers took the next step as a program by surpassing previous team bests in multiple categories. Offensively, Clemson tallied 488 hits with a .313 average. The Tigers led the ACC in On-Base Percentage (.409) and Scoring (6.08 per game) and finished in the top 25 of the NCAA in eight offensive categories. Defensively, Clemson finished with a .980 fielding percentage to lead the ACC and finish seventh in

the NCAA. The Tiger defense also turned 31 double plays (.510 per game), which ranked sixth in the nation. With Rittman's tutelage, redshirt junior Valerie Cagle was named the 2023 USA Softball Player of the Year, a Rawlings Gold Glove (pitcher) recipient, the ACC Player of the Year and a NFCA First Team All-American for the second time of her career after she led the ACC in seven categories and ranked in the top 25 of the NCAA in 11. As a team, the Tigers clocked their highest individual ranking climbing as high as No. 4 and finished the season at No. 9 in both major polls. Clemson finished with five All-ACC honorees and 15 on the All-Academic Softball Team, while Cagle was tabbed the ACC Softball Scholar-Athlete of the Year. After posting a 3.68 team GPA, 17 student-athletes received Easton/NFCA All-America Scholar Athlete distinctions while the team maintained the 12th-highest team GPA in Division I.

In the third year of the program, Rittman continued to guide Clemson to new heights by making the program's first Super Regional appearance after earning the program's first national seed and hosting a Regional. Early in the season, the Tigers upset then-No. 6 Washington, 2-0, at the St. Pete/Clearwater Elite Invitational for the program's first top-10 win. Clemson followed that by playing its 100th game in program history against Illinois on March 13. The Tigers won with a 4-0 victory to tie Clemson women's tennis for the most wins through a program's first 100 games with a 78-22 record. With that record, Rittman solidified himself as the winningest coach among active head coaches at Clemson surpassing Dabo Swinney (football), who held a 74-26 record. The Tigers continued to reach new levels by winning their 100th game in only 130 games on May 1 with a 3-2 win against Georgia Tech on Senior Day to become the second-fastest program at Clemson to reach 100 wins trailing only women's tennis (128). The Tigers were ACC Tournament Runner-Ups after defeating then-No. 19 Notre Dame, 7-3, and then-No. 2 Virginia Tech, 4-1, in the first two rounds before falling in the championship game, 8-6, to then-No. 3 Florida State. The upset win over Virginia Tech marks Clemson softball's highest victory over a ranked opponent in program history. The hot streak continued for Clemson entering postseason as the Tigers earned the No. 10 national seed for the NCAA softball tournament. The Tigers welcomed No. 17 Auburn, Louisiana and UNCW for the Clemson Regional and made a clean sweep in three games by shutting out all three programs and run-ruling UNCW and Louisiana to advance to the Stillwater Super Regional. Clemson finished the year with five All-ACC team selections, and Valerie Cagle was named a NFCA First Team All-American. Behind Rittman's efforts, Clemson climbed as high as No. 14 in the NFCA national rankings and earned its first single digit ranking from ESPN/USA Softball rankings coming in at No. 9.

Rittman graduated from New Mexico State with a degree in journalism in 1986. He was a three-year letterwinner in baseball as an outfielder at NMSU after transferring from Yavapai Junior College in Prescott, Arizona.

Rittman and his wife, Lorie, a former softball player at the University of Oklahoma, are the parents of Justin, a UCLA graduate and former fullback for the Bruins, and Jake, a Notre Dame graduate and former punter for the Fighting Irish.

Read Coach Rittman's full bio at [ClemsonTigers.com](https://www.clemsonsoftball.com)

## HEAD COACH JOHN RITTMAN

**Education:** Bachelor's degree in journalism at New Mexico State (1986).

**Playing Experience:** Three-year letterman at New Mexico State (1984-86).

**Coaching Experience:** Assistant Coach at Oregon (1988-90) ... Assistant Coach at Minnesota (1991-92) ... Assistant Coach at Washington (1993-96) ... Head Coach at Stanford (1997-2014) ... Associate Head Coach at Kansas (2015, 2017) ... Head Coach at Clemson (2020-present).

**Family:** Wife, Lorie Rittman ... sons, Justin and Jake.



### RITTMAN'S HEAD COACHING RECORD

Year	School	W-L	NCAA
1997	Stanford	31-27-1	
1998	Stanford	41-18	Regionals
1999	Stanford	40-25	Regionals
2000	Stanford	45-18	Regionals
2001	Stanford	54-16-1	World Series
2002	Stanford	44-20	Regionals
2003	Stanford	41-26	Regionals
2004	Stanford	49-19	World Series
2005*	Stanford	43-16	Super Regionals
2006	Stanford	42-18	Super Regionals
2007	Stanford	35-21-1	Regionals
2008	Stanford	49-15	Super Regionals
2009	Stanford	48-11	Super Regionals
2010	Stanford	37-19	Regionals
2011	Stanford	42-17	Super Regionals
2012	Stanford	40-19	Regionals
2013	Stanford	39-21	Regionals
2014	Stanford	30-25	
2020^	Clemson	19-8	N/A
2021*	Clemson	44-8	Regionals
2022	Clemson	42-15	Super Regionals
2023	Clemson	49-12	Super Regionals
2024	Clemson	34-17	Regionals
2025	Clemson	18-8	

\* - conference champion; ^ - season suspended March 12 and later canceled due to a coronavirus (COVID-19) pandemic

### RITTMAN'S HEAD COACHING RECORD

School	Seasons	Years	W-L	Win %
Stanford	18	1997-2014	750-351-3	.681
Clemson	6	2020-25	207-72	.742
<b>Totals</b>	<b>24</b>	<b>1997-2014, 2020-25</b>	<b>957-423-3</b>	<b>.692</b>

### RITTMAN VS. ACC AS CLEMSON HEAD COACH

Team	Overall	Home	Away	Neutral
Boston College	9-1	6-1	3-0	0-0
California	0-0	0-0	0-0	0-0
Duke	4-12	3-7	1-3	0-3
Florida State	0-7	0-3	0-3	0-1
Georgia Tech	10-0	3-0	6-0	1-0
Louisville	8-2	2-1	6-1	0-0
North Carolina	11-0	7-0	3-0	1-0
NC State	8-2	6-1	2-1	0-0
Notre Dame	5-2	2-1	2-1	1-0
Pittsburgh	8-1	5-1	3-0	0-0
Stanford	0-0	0-0	0-0	0-0
Syracuse	9-1	3-0	6-1	0-0
Virginia	12-2	6-0	5-2	1-0
Virginia Tech	4-7	1-5	1-2	2-0
<b>Totals</b>	<b>88-38</b>	<b>44-20</b>	<b>38-14</b>	<b>6-4</b>

# 2025 BROADCAST SHEET

1



## KENNEDY ARIAL

Sr. • OF • 5-6 • Cumming, Ga. • South Forsyth HS

	AVG	AB	RUNS	HITS	RBI	BB	SB
2025	.250	12	8	3	2	0	0
Career	.222	18	22	4	3	1	0

Season Highs: 1 hit (x3), 2 RBI, 1 run (x8)

- Tallied first career home run vs. Missouri State - 2-run homer
- Recorded first hit of the season vs. Georgia State
- Has scored 7 runs on the year, most recently vs. Indiana
- Scored go-ahead run against Georgia in upset win
- Recorded first career hit with an RBI single against Fordham (3/10/24)
- Scored 14 runs in 2024
- Drew a walk in first collegiate start (3/9/24)

2



## BROOKE McCUBBIN

Sr. • RHP • 5-10 • Locust Grove, Ga. • Locust Grove HS

	ERA	W-L	APP	CG	SHO	IP	SO
2025	3.00	5-3	13	1	1/2	49.0	36
Career	2.28	25-9	77	5	3/13	227.0	141

Season Highs: 7 SO, 7.1 IP

- Struck out season-high 7 batters vs. Marshall
- Earned first win of 2025 vs. Kansas with 6.1 innings and 5 strikeouts
- Allowed only 1 hit in 5.0 innings vs. Charleston Southern
- Won first Top-15 victory vs. Georgia - 2.0 IP, 2 SO
- Had 11 games in 2024 where she didn't concede a walk
- Threw 6.2 hitless innings vs. Furman (4/5/23)
- Threw first solo shutout of career Jacksonville with 5 strikeouts (3/11/23)

3



## KYLEE JOHNSON

Sr. • OF/INF • 5-8 • Wesley Chapel, Fla. • Wiregrass Ranch HS

	AVG	AB	RUNS	HITS	RBI	BB	SB
2025	.133	30	7	4	3	2	4
Career	.192	104	17	20	13	12	15

Season Highs: 1 SB (x3), 1 hit (x4), 2 RBI

- Appeared in 21 games, starting 8
- Hit 2-run homer vs. Charlotte
- Helped spark offense vs. UCF to force extra innings with a hit and a run scored
- Stole 14th career stolen base with 1 against Charleston Southern
- Clocked 2 home runs in series opener against North Carolina (3/15/24)
- Second on the team in 2024 with 11 stolen bases
- Stole 2 bases against Ole Miss (2/23/24)

4



## ABY VIEIRA

Sr. • C/UTL • 5-9 • Mission Viejo, Calif. • Mission Viejo HS

	AVG	AB	RUNS	HITS	RBI	BB	SB
2025	.347	72	16	25	10	4	3
Career	.287	421	53	121	65	25	5

Season Highs: 4 hits, 1 BB (x4), 1 HBP (x4), 3 runs

- Finished 6-for-6 with 3 runs and 3 RBIs in 2 games vs. Indiana
- Had 2 hits and scored 2 runs in win vs. Charlotte
- Finished 3-for-3 with two doubles, 1 RBI and 1 run vs. Marshall
- Went 2-for-3 with 1 run scored vs. Auburn
- Clocked 2 RBIs with 1 walk, 1 hit and 1 stolen base vs. Mercer (3/8/24)
- Hit solo home run in series opener at Virginia (3/22/24)
- Went 3-for-3 with 1 run and 1 RBI vs. Longwood (3/9/24)

5



## MARIAN COLLINS

Fr. • INF • 5-11 • Marietta, Ga. • Mount Paran Christian School

	AVG	AB	RUNS	HITS	RBI	BB	SB
2025	.328	67	19	22	15	7	0
Career	.328	67	19	22	15	7	0

Season Highs: 2 hits (x5), 2 runs (x5), 3 RBIs (x3), 2 BB (x2)

- 1 of 3 freshmen to start over 20 games
- Clocked 2 hits and 2 runs scored vs. Indiana
- Had 3 RBIs vs. Furman, Charleston Southern (Game 2) and Duke
- Record home runs in back-to-back games against Furman & Charleston Southern
- Tallied 2 RBIs off 2 hits, including a triple, and 2 runs vs. Georgia State
- Hit first collegiate home run vs. Missouri State
- Drew 2 walks against UCF & Elon

7



## REESE BASINGER

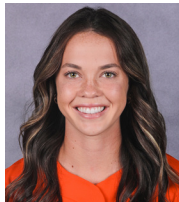
Sr. • RHP • 5-11 • Evans, Ga. • Winthrop (Evans HS)

	ERA	W-L	APP	CG	SHO	IP	SO
2025	2.37	6-3	17	5	2/1	65.0	60
Career	2.33	42-45	80	54	11/1	576.1	537

Season Highs: 8.0 IP, 9 SO

- Surpassed 500 career strikeouts with four against Charlotte
- Threw her 54th career complete game and only allowed 2 runs (1 ER) vs. Duke
- Threw 3.1 hitless innings vs. Furman
- Struck out a season-high 9 in 5.1 innings of relief vs. Ohio State
- Finished with 8 strikeouts vs. Georgia in upset win
- Had 2 solo shutouts during the Clemson Classic (Villanova & Marshall)
- Threw a perfect game vs. South Carolina State with 13 strikeouts (2023)

8



## MADI LARDIZABAL

Fr. • INF • 5-8 • Murrieta, Calif. • Murrieta Mesa HS

	AVG	AB	RUNS	HITS	RBI	BB	SB
2025	.000	3	0	0	0	0	0
Career	.000	3	0	0	0	0	0

Season Highs: 1 AB (x3)

- Had first collegiate at bat against Missouri State
- Defensive Player of the Year (2022)
- Chino Hills HS League Champions (2021 & 2022)
- First Team All-League selection in 2021 & 2022
- Ranked No. 20 in Extralnings Softball's Hot 100
- Played club ball for Batbusters Garcia, Suncats Natividad & Athletics Mercado Premiere

9



## JAMISON BROCKENBROUGH

Jr. • OF • 5-8 • Locust Grove, Ga. • Locust Grove HS

	AVG	AB	RUNS	HITS	RBI	BB	SB
2025	.258	62	18	16	10	12	4
Career	.260	192	42	50	34	27	7

Season Highs: 3 hits, 1 HR (x2), 3 RBIs, 3 runs

- Went 3-for-3 with 3 runs scored vs. Lafayette
- Hit first home run as a Tiger vs. Kansas
- Tallied a 3-run homer vs. Charlotte and scored 2 runs
- Represented Ireland at the 2022 U-22 European Softball Championship
- Recorded 24 RBIs and 24 runs scored with 3 stolen bases at Tennessee
- Appeared in 60 games for the Lady Vols, starting 44 during the 2023 season
- Hit first collegiate home run against LSU (2023)

# 2025 BROADCAST SHEET

10



## RILEY BURTON

*So.* • C/UTL • 5-11 • Lancaster, S.C. • Legion Collegiate Academy

	AVG	AB	RUNS	HITS	RBI	BB	SB
2025	.000	0	0	0	0	0	0
Career	.000	1	1	0	0	0	0

**Season Highs:**

- Made 3 appearances in 2025
- Appeared in 3 games as a freshman
- Had first collegiate at bat against Mercer (3/8/24)
- Scored first collegiate run vs. Fordham (3/10/24)
- ACC Honor Roll
- 2024 Easton/NFCA All-America Scholar Athlete
- Helped Legion Collegiate Academy to become 2021 2A SCHS State Champions

11



## HAYLEE WHITESIDES

*\*Jr.* • INF • 5-5 • Duncan, S.C. • Byrnes HS

	AVG	AB	RUNS	HITS	RBI	BB	SB
2025	.333	12	4	4	6	1	0
Career	.286	14	6	4	7	1	0

**Season Highs:** 2 Run (x2), 1 Hit (x4), 3 RBIs

- Hit first career home run vs. Furman
- Tallied first career hit against Georgia with a double
- Added another double with hit vs. Indiana
- Picked up first RBI of 2025 with sac fly vs. Lafayette
- Notched three RBIs vs. Charleston Southern
- Had first collegiate at bat vs. UC San Diego (2/14/24)
- 2024 Easton/NFCA All-America Scholar Athlete

12



## JULIA KNOWLER

*So.* • INF • 5-9 • Fort Myers, Fla. • Fort Myers HS

	AVG	AB	RUNS	HITS	RBI	BB	SB
2025	.352	88	14	31	34	4	0
Career	.308	198	28	61	62	20	0

**Season Highs:** 3 hits (x3), 1 HR (x9), 5 RBIs (x3), 2 2B (x2)

- Recorded 5 RBIs in games against Ohio State, Charlotte and Lafayette
- Clocked 3 hits vs. Missouri State, UCF and Charlotte
- Tallied 4 RBIs vs. Missouri State off a double and home run
- Has 8 multi-hit games in 2025 and 6 multi-RBI games
- Finished her freshman campaign with 6 multi-hit games and 9 multi-RBI games
- Opened collegiate career with 2 home runs and 4 RBIs vs. Missouri State (2/8/24)
- Missed 20 games due to injury in 2024 - had non-orthopedic surgery

13



## ABI STUART

*\*\*Sr.* • C/UTL • 5-9 • Snow Camp, N.C. • Southern Alamance HS

	AVG	AB	RUNS	HITS	RBI	BB	SB
2025	.000	4	0	0	0	1	0
Career	.227	150	18	34	21	14	0

**Season Highs:** 1 AB (x4), 1 BB

- Appeared in 5 games as a pinch hitter in 2025
- Member of the 2020 inaugural softball team at Clemson
- Recorded a double for her first hit of the 2024 season vs. Wichita State (2/14/24)
- Tallied 1 RBI vs. Fordham (3/10/24)
- Scored a run after drawing a walk at Syracuse (4/6/24)
- Clocked a hit as a pinch hitter vs. NC State (3/2/24)
- Had 19 at bats and held a .211 SLG and .286 OBP (2023)

16



## MACEY CINTRON

*Fr.* • RHP/1B • 5-11 • Cumming, Ga. • Wesleyan School

	AVG	AB	RUNS	HITS	RBI	BB	SB
2025	.300	70	13	21	20	14	0
Career	.300	70	13	21	20	14	0

**Season Highs:** 3 hits, 1 HR (x5), 3 RBIs (x2)

	ERA	W-L	APP	CG	SHO	IP	SO
2025	2.85	5-2	12	1	0/2	34.1	29
Career	2.85	5-2	12	1	0/2	34.1	29

**Season Highs:** 7.0 IP, 10 SO

- 1 of 3 freshmen to start over 20 games
- Hit a home run in first collegiate at bat - 2-run shot vs. Ole Miss
- Clocked 1 homer and scored 2 runs vs. Charlotte
- Finished 3-for-4 with 1 homer and 3 RBI vs. Kentucky
- Had 2 hits and scored twice in the March 7 victory over Duke
- Struck out 10 batters against Elon
- Struck out 8 batters in first start in the circle vs. Georgia State
- Ranked No. 1 on Extralinnings Softball Top 100
- Represented Puerto Rico Junior Olympic National Team
- Pitched for the Puerto Rico JNT at the WBSC U-19 Women's Softball World Cup

17



## AVA WILSON

*Fr.* • OF • 5-9 • Acworth, Ga. • North Paulding HS

	AVG	AB	RUNS	HITS	RBI	BB	SB
2025	.298	57	13	17	19	7	2
Career	.298	57	13	17	19	7	2

**Season Highs:** 2 hits (x3), 1 HR (x5), 1 run (x13), 2 BB

- 1 of 3 freshmen to start over 20 games
- First career home run was a grand slam vs. Missouri
- Has 5 home runs - tied for 4th most by a freshman in program history
- Had 3 RBI against Duke and has 6 multi-RBI games this season
- Finished 2-for-2 with 1 homer, 2 walks and 1 stolen base vs. Marshall
- First Team All-Region (2021 & 2022) & Second Team All-Region (2020)
- Older sister, Emma, played softball at Florida State

19



## BROOK MELNYCHUK

*Gr.* • RHP • 5-5 • Hudson Bay, Canada • LA Tech (Hudson Bay CS)

	ERA	W-L	APP	CG	SHO	IP	SO
2025	2.40	2-0	7	0	0/2	11.2	4
Career	2.48	21-15	67	6	3/6	211.1	98

**Season Highs:** 3.0 IP, 1 SO (x4)

- Has appeared in the circle in 7 games
- Earned the win with 2.0 innings of work against Missouri State
- Picked up the win vs. Lafayette with 3.0 innings of work
- Posted a 2.77 ERA with 13 wins in 2024 at LA Tech
- 2-time CUSA Pitcher of the Week
- Led LA Tech with a 2.04 ERA in 75.2 IP (2023)
- ICCAC Pitcher of the Year (2021) & Second Team NJCAA All-American (2021)



# 2025 BROADCAST SHEET

20



## SAM MINISH (MIN-ISH)

Fr. • OF/C • 5-6 • Hull, Ga. • Madison County HS

	AVG	AB	RUNS	HITS	RBI	BB	SB
2025	.381	42	12	16	7	12	0
Career	.381	42	12	16	7	12	0

Season Highs: 3 hits, 2 runs (x3), 1 2B (x5), 3 RBIs

- Appeared in 19 games, starting 17
- Finished with 3 hits and 2 runs vs. Missouri State
- Tallied 1 double, 2 runs and 1 RBI vs. Indiana
- Recorded a hit in each game of the Duke series
- Three-time GACA AAAAA First Team All-State & two-time MVP
- Assisted Madison Country HS to Final Four and Elite Eight finish for 8-AAAA
- Played club ball for Impact Lunsford, Mojo Lunsford and Mojo Fisher/Ramsey

21



## JADEYN RUSZKOWSKI (RUSS-COW-SKI)

\*Jr. • OF • 5-8 • Lithia Fla. • Newsome HS

	AVG	AB	RUNS	HITS	RBI	BB	SB
2025	.000	3	0	0	0	0	0
Career	.150	40	2	6	2	2	0

Season Highs: 1 AB (x3)

- Made 3 appearances as a pinch hitter in 2025
- Appeared in 6 games, starting 2, in 2024
- Drew a walk vs. NC State (3/2/24) and at Notre Dame (4/20/24)
- Tallied home runs in back-to-back games at Virginia Tech (2023)
- Clocked first collegiate hit against Georgia State (2/10/23)
- 2023 Easton/NFCA All-America Scholar Athlete
- 2-time ACC Honor Roll

22



## TAYLOR PIPKINS

Fr. • INF • 5-6 • Cumming, Ga. • North Forsyth HS

	AVG	AB	RUNS	HITS	RBI	BB	SB
2025	.267	15	2	4	2	2	0
Career	.267	15	2	4	2	2	0

Season Highs: 2 runs, 1 hit (x4), 1 BB (x2), 1 RBI (x2)

- Appeared in 12 games, starting 8
- Tallied 1 hit, 1 RBI, 1 walk and 2 runs vs. Missouri State
- Defensive Player of the Year at North Forsyth HS (2021)
- Offensive Player of the Year at North Forsyth HS (2022)
- First Team All-Region, First Team All-County & First Team All-State
- Named No. 24 prospect by Extralnings Softball
- Played club ball for Georgia Impact Caymont

25



## ALEX BROWN

Sr. • INF • 5-7 • Savannah, Ga. • North Carolina (South Effingham HS)

	AVG	AB	RUNS	HITS	RBI	BB	SB
2025	.365	85	28	31	15	14	7
Career	.322	531	113	171	79	47	24

Season Highs: 4 hits, 4 runs, 1 SB (x6), 4 RBIs

- Hit first career grand slam vs. Charleston Southern
- Scored a run in 11 of the past 13 games, including 10 straight from 2/22-3/5
- Set career mark with 4 hits and 4 runs vs. Missouri State
- Second Team All-ACC (2023 & 2024)
- 2023 NFCA Southeast All-Region Third Team (North Carolina)
- Led the team in 2024 with 21 multi-hit games and 61 total hits
- Set Clemson single-season record with 186 at bats

27



## RILEY FENNEL

Fr. • OF • 5-8 • Oviedo, Fla. • Oviedo HS

	AVG	AB	RUNS	HITS	RBI	BB	SB
2025	.667	3	5	2	0	0	0
Career	.667	3	5	2	0	0	0

Season Highs: 1 HBP (x2), 1 Run (x5), 2 hit

- Made first collegiate start against Marshall & got 1 hit
- Finished with a double and run scored vs. Furman
- Was hit by 1 pitch at FAU
- Scored 1 run vs. Georgia State, vs. Kentucky & Marshall
- First Team All-State selection (2021), Second Team All-Conference (2022)
- Played club ball for Firecrackers Bordeau, Texas Dirt Divas, FI Storm Shepherd and JJ Intensity KOD

28



## MADDIE MOORE

Sr. • INF • 5-7 • Loomis, Calif. • Del Oro HS

	AVG	AB	RUNS	HITS	RBI	BB	SB
2025	.500	66	25	33	23	10	2
Career	.313	495	135	155	113	82	42

Season Highs: 4 hits, 2 runs (x8), 3 RBI, 1 HR (x7)

- ACC Player of the Week for games played March 3-9
- Went 4-for-4 with 2 runs and 2 doubles vs. Lafayette
- Went 4-for-7 with 2 run, 2 homers & 5 RBIs in two games vs. Indiana
- Recorded her 100th RBI with two against Marshall on March 23
- Tallied 9 hits during week 5, including 2 home runs
- Has 42 career stolen bases to sit third in Clemson history
- 2024 NFCA Third Team All-American & 2024 First Team All-ACC

44



## OLIVIA DUNCAN

So. • LHP • 5-10 • Buford, Ga. • Buford HS

	ERA	W-L	APP	CG	SHO	IP	SO
2025	2.62	0-0	3	0	0/2	8.0	4
Career	4.50	0-0	9	0	0/4	14.0	6

Season Highs: 3.0 IP (x2), 2 SO

- Struck out 1 batter in 3.0 innings vs. Lafayette
- Struck out 2 batters in 3.0 innings of work vs. Missouri State
- Made collegiate debut with start vs. Liberty (2/10/24)
- Struck out 2 batters in 2024 - 1 vs. Libery & 1 vs. Mercer
- Finished her freshman campaign with 6 innings pitched
- ACC Honor Roll & Easton/NFCA All-America Scholar Athlete (2024)
- 2023 Georgia Gatorade Player of the Year

# 2025 TV ROSTER



1

**KENNEDY ARIAIL**  
So. - OF  
Ariel



2

**BROOKE McCUBBIN**  
Sr. - RHP



3

**KYLEE JOHNSON**  
So. - OF/INF



4

**ABY VIEIRA**  
Sr. - C/UTL  
vee-AIR-uh



5

**MARIAN COLLINS**  
Fr. - INF



7

**REESE BASINGER**  
Sr. - RHP  
BAY-sing-er



8

**MADI LARDIZABAL**  
Fr. - INF  
lar-dih-ZAH-bowl



9

**JAMISON BROCKENBROUGH**  
Jr. - OF  
brock-IN-bro



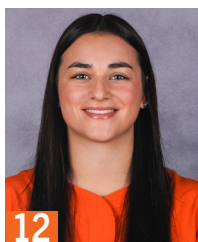
10

**RILEY BURTON**  
So. - C/UTL



11

**HAYLEE WHITESIDES**  
RJR. - INF



12

**JULIA KNOWLER**  
So. - INF



13

**ABI STUART**  
RSr. - C/UTL



16

**MACEY CINTRON**  
Fr. - RHP/1B  
SIN-tron



17

**AVA WILSON**  
Fr. - OF



19

**BROOK MELNYCHUK**  
Gr. - RHP  
MEL-lynn-chuck



20

**SAM MINICH**  
Fr. - OF/C  
MIN-ish



21

**JADEYN RUSZKOWSKI**  
RJr. - OF  
russ-COW-ski



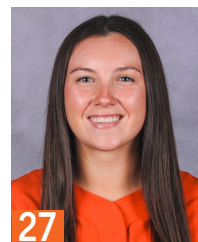
22

**TAYLOR PIPKINS**  
Fr. - INF



25

**ALEX BROWN**  
Sr. - INF



27

**RILEY FENNEL**  
Fr. - OF



28

**MADDIE MOORE**  
Sr. - INF



44

**OLIVIA DUNCAN**  
So. - LHP



QR CODE FOR  
PRONUNCIATIONS



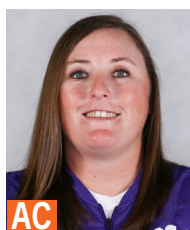
HC

**JOHN RITTMAN**  
6th Season



AC

**KYLE JAMIESON**  
6th Season



AC

**KATIE "CRASH" REPOLE**  
1st Season



AC

**RYAN WIELGMAN**  
1st Season



DO

**JEANNIE MURPHY**  
6th Season



PD

**JESSIE HARPER**  
3rd Season

# PLAYER HIGHS

## #1 KENNEDY ARIAIL

Career (Last)	Category	2025
1, 22x (Duke 3/7/25)	Runs	1, 8x (Duke 3/7)
1, 4x (Villanova 2/21/25)	Hits	1, 3x (Villanova 2/21)
2 (vs. Missouri State 2/9/25)	RBI	2 (vs. Missouri State 2/9)
-	Doubles	-
-	Triples	-
1 (vs. Missouri State 2/9)	Home Runs	1 (vs. Missouri State 2/9)
1 (Longwood 3/9/24)	Walks	-
-	HBP	-
-	Stolen Bases	-

## #2 BROOKE McCUBBIN

Career (Last)	Category	2025
7.1 (vs. UCF 2/15)	IP	7.1 (vs. UCF 2/15)
7, 2x (Charlotte 2/18/25)	Runs Allowed	7 (Charlotte 2/18)
6 (vs. Auburn 2/13/25)	Earned Runs	6 (vs. Auburn 2/13)
3, 3x (at Syracuse 4/7/24)	Walks Issued	2, 3x (Indiana 3/2)
8 (vs. Michigan State 2/25/23)	Strikeouts	7 (Marshall 2/22)
12 (vs. UCF 2/15/25)	Hits Allowed	12 (vs. UCF 2/15)
3 (vs. UCF 2/15/25)	Doubles Allowed	3 (vs. UCF 2/15)
1, 4x (Charleston Southern 3/5/25)	Triples Allowed	1, 3x (Charleston Southern 3/5)
3, 2x (at Oklahoma 5/27/23)	Homers Allowed	2 (vs. Auburn 2/13)

## #3 KYLEE JOHNSON

Career (Last)	Category	2025
2, 2x (North Carolina 3/15/24)	Runs	1, 7x (Furman 3/4)
2, 2x (at Virginia 3/24/24)	Hits	1, 4x (Lafayette 2/28)
2, 3x (Charlotte 2/18/25)	RBI	2 (Charlotte 2/18)
1, 3x (North Carolina 3/17/24)	Doubles	-
-	Triples	-
2 (North Carolina 3/15/24)	Home Runs	1 (Charlotte 2/18)
2 (Gardner-Webb 3/13/24)	Walks	1, 2x (Charleston Southern 3/5)
1 (vs. Kansas 2/6/25)	HBP	1 (vs. Kansas 2/6)
2 (Ole Miss 2/23/24)	Stolen Bases	1, 3x (Charleston Southern 3/5)

## #4 ABY VIEIRA

Career (Last)	Category	2025
3 (Duke 3/7/25)	Runs	3 (Duke 3/7)
4 (Indiana 3/1/25)	Hits	4 (Indiana 3/1)
4 (Akron 2/26/22)	RBI	3 (Indiana 3/1)
2, 3x (Indiana 3/1/25)	Doubles	2, 2x (Indiana 3/1)
-	Triples	-
1, 9x (at Virginia 3/22/24)	Home Runs	-
2 (at Boston College 4/2/23)	Walks	1, 4x (Lafayette 2/28)
2 (Fordham 3/10/24)	HBP	1, 4x (Indiana 3/2)
1, 5x (Duke 3/7/25)	Stolen Bases	1, 3x (Duke 3/7)

## #5 MARIAN COLLINS

Career (Last)	Category	2025
same	Runs	2, 5x (Furman 3/4)
same	Hits	2, 5x (Duke 3/7)
same	RBI	3, 3x (Duke 3/7)
same	Doubles	2 (Duke 3/7)
same	Triples	1 (vs. Georgia State 2/8)
same	Home Runs	1, 4x (Charleston Southern 3/5)
same	Walks	2, 2x (Elon 2/21)
same	HBP	1, 2x (ECU 2/28)
-	Stolen Bases	-

## #7 REESE BASINGER

Career (Last)	Category	2025
9.0 (at Elon 2/11/23)	IP	8.0 (Villanova 2/21)
8 (at Radford 3/30/24)	Runs Allowed	5 (vs. Missouri 2/13)
8 (at Radford 3/30/24)	Earned Runs	5 (vs. Missouri 2/13)
6 (Villanova 2/21/25)	Walks Issued	6 (Villanova 2/21)
16 (Radford 3/25/23)	Strikeouts	9 (vs. Ohio State 2/16)
13 (at Radford 3/30/24)	Hits Allowed	8 (Indiana 3/1)
3, 3x (Georgia 2/26/25)	Doubles Allowed	3 (Georgia 2/26)
1, 8x (Duke 3/9/25)	Triples Allowed	1, 3x (Duke 3/9)
3, 3x (at Radford 3/29/24)	Homers Allowed	2 (Duke 3/7)

## #8 MADI LARDIZABAL

Career (Last)	Category	2025
-	Runs	-
-	Hits	-
-	RBI	-
-	Doubles	-
-	Triples	-
-	Home Runs	-
-	HBP	-
-	Stolen Bases	-

## #9 JAMISON BROCKENBROUGH

Career (Last)	Category	2025
3 (Lafayette 2/28/25)	Runs	3 (Lafayette 2/28)
3, 2x (Lafayette 2/28/25)	Hits	3 (Lafayette 2/28)
5 (Northern Kentucky 5/19/23)	RBI	3 (Charlotte 2/18)
1, 4x (Lafayette 2/28/25)	Doubles	1 (Lafayette 2/28)
1 (Northern Kentucky 5/19/23)	Triples	-
1, 5x (Charlotte 2/18/25)	Home Runs	1, 2x (Charlotte 2/18)
2, 3x (Charleston Southern 3/5/25)	Walks	2, 2x (Charleston Southern 3/5)
1, 8x (Marshall 2/23/25)	HBP	1 (Marshall 2/23)
1, 7x (Lafayette 2/28/25)	Stolen Bases	1, 4x (Lafayette 2/28)

## #10 RILEY BURTON

Career (Last)	Category	2025
1 (Fordham 3/10/24)	Runs	-
-	Hits	-
-	RBI	-
-	Doubles	-
-	Triples	-
-	Home Runs	-
-	Walks	-
-	HBP	-
-	Stolen Bases	-

## #11 HAYLEE WHITESIDES

Career (Last)	Category	2025
2 (Charleston Southern 3/5/25)	Runs	2 (Charleston Southern 3/5)
1, 4x (Charleston Southern 3/5/25)	Hits	1, 4x (Charleston Southern 3/5)
3 (Charleston Southern 3/5/25)	RBI	3 (Charleston Southern 3/5)
1, 2x (Indiana 3/2/25)	Doubles	1, 2x (Indiana 3/2)
-	Triples	-
1 (Furman 3/4/25)	Home Runs	1 (Furman 3/4)
1 (Charleston Southern 3/5/25)	Walks	1 (Charleston Southern 3/5)
-	HBP	-
-	Stolen Bases	-

## #12 JULIA KNOWLER

Career (Last)	Category	2025
3 (vs. Missouri State 2/8/24)	Runs	2 (Charlotte 2/18)
3, 4x (Charlotte 2/18/25)	Hits	3, 3x (Charlotte 2/18)
5, 3x (Lafayette 2/28/25)	RBI	5, 3x (Lafayette 2/28)
2, 3x (Charlotte 2/18/25)	Doubles	2, 2x (Charlotte 2/18)
-	Triples	-
2 (vs. Missouri State 2/8/24)	Home Runs	1, 9x (Duke 3/8)
2, 2x (Elon 2/21/25)	Walks	2 (Elon 2/21)
1, 2x (at FAU 2/7/25)	HBP	1 (at FAU 2/7)
-	Stolen Bases	-

## #13 ABI STUART

Career (Last)	Category	2025
3 (vs. St. John's 2/9/20)	Runs	-
2, 6x (Boston College 4/16/21)	Hits	-
3, 3x (Winthrop 4/13/21)	RBI	-
2 (Furman 3/12/21)	Doubles	-
-	Triples	-
-	Home Runs	-
1, 5x (North Carolina 4/2/21)	Walks	1 (vs. Missouri State 2/9)
2 (Western Carolina 2/12/20)	HBP	-
1, 2x (Boston College 4/17/21)	Stolen Bases	-

## #16 MACEY CINTRON

Career (Last)	Category	2025
same	Runs	2, 3x (Duke 3/7)
same	Hits	3 (vs. Kentucky 2/14)
same	RBI	3, 2x (Kentucky 2/14)
same	Doubles	1, 3x (Duke 3/9)
-	Triples	-
same	Home Runs	1, 5x (Charlotte 2/18)
same	Walks	2, 2x (Indiana 3/1)
same	HBP	1 (Elon 2/21)
-	Stolen Bases	-

same	IP	7.0 (Elon 2/21)
same	Runs Allowed	4, 2x (vs. Kentucky 2/14)
same	Earned Runs	4 (vs. Kentucky 2/14)
same	Walks Issued	4 (Duke 3/8)
same	Strikeouts	10 (Elon 2/21)
same	Hits Allowed	5 (vs. Kentucky 2/14)
same	Doubles Allowed	3, 2x (vs. Kentucky 2/14)
-	Triples Allowed	-
same	Homers Allowed	1, 4x (Duke 3/8)

# PLAYER HIGHS

## #17 AVA WILSON

Career (Last)	Category	2025
same	Runs	1, 13x (Duke 3/7)
same	Hits	2, 3x (Marshall 2/23)
same	RBI	4 (vs. Missouri 2/13)
same	Doubles	1 (Indiana 3/1)
-	Triples	-
same	Home Runs	1, 5x (Indiana 3/2)
same	Walks	2 (ECU 2/28)
same	HBP	1, 3x (Georgia 2/26)
same	Stolen Bases	1, 2x (Charleston Southern 3/5)

## #19 BROOK MELYNCHUK

Career (Last)	Category	2025
8.0 (at Western Kentucky 5/6/23)	IP	3.0 (Lafayette 2/28)
7 (at Louisiana 2/20/24)	Runs Allowed	3 (vs. Ohio State 2/16)
5, 2x (Western Kentucky 3/23/24)	Earned Runs	3 (vs. Ohio State 2/16)
4, 2x (at Liberty 3/29/24)	Walks Issued	2 (Lafayette 2/28)
5 (at ULM 2/16/24)	Strikeouts	1, 4x (vs. Ohio State 2/16)
7, 3x (FIU 5/4/24)	Hits Allowed	4, 3x (Lafayette 2/28)
1, 18x (UTEP 5/8/24)	Doubles Allowed	2 (vs. Missouri 2/13)
1 (at SLU 2/15/23)	Triples Allowed	-
2 (at Jacksonville State 4/14/24)	Homers Allowed	1 (vs. Ohio State 2/16)

## #20 SAM MINISH

Career (Last)	Category	2025
same	Runs	2, 3x (Duke 3/7)
same	Hits	3 (vs. Missouri State 2/9)
same	RBI	3 (vs. Georgia State 2/8)
same	Doubles	1, 5x (Duke 3/7)
same	Triples	1 (ECU 2/28)
-	Home Runs	-
same	Walks	2, 3x (Charleston Southern 3/5)
same	HBP	1, 2x (Indiana 3/1)
-	Stolen Bases	-

## #21 JADEYN RUSZKOWSKI

Career (Last)	Category	2025
1, 2x (at Virginia Tech 4/30/23)	Runs	-
1, 6x (Mercer 3/8/24)	Hits	-
1, 2x (at Virginia Tech 4/30/23)	RBI	-
-	Doubles	-
-	Triples	-
1, 2x (at Virginia Tech 4/30/23)	Home Runs	-
1, 2x (at Notre Dame 4/20/24)	Walks	-
1 (Mercer 3/8/23)	HBP	-
-	Stolen Bases	-

## #22 TAYLOR PIPKINS

Career (Last)	Category	2025
same	Runs	2 (vs. Missouri State 2/9)
same	Hits	1, 4x (Furman 3/4)
same	RBI	1, 2x (vs. Missouri State 2/9)
-	Doubles	-
-	Triples	-
-	Home Runs	-
same	Walks	1, 2x (vs. Missouri State 2/9)
-	HBP	-
-	Stolen Bases	-

## #25 ALEX BROWN

Career (Last)	Category	2025
4 (vs. Missouri State 2/9/25)	Runs	4 (vs. Missouri State 2/9)
4, 2x (vs. Missouri State 2/9/25)	Hits	4 (vs. Missouri State 2/9)
4, 2x (Charleston Southern 3/5/25)	RBI	4 (Charleston Southern 3/5)
1, 19x (Furman 3/4/25)	Doubles	1, 8x (Furman 3/4)
1, 7x (vs. Ohio State 2/16/25)	Triples	1 (vs. Ohio State 2/16)
1, 10x (Charleston Southern 3/5/25)	Home Runs	1 (Charleston Southern 3/5)
3 (Charleston Southern 3/5/25)	Walks	3 (Charleston Southern 3/5)
1, 9x (Marshall 2/23/25)	HBP	1, 2x (Marshall 2/23)
1, 23x (Charleston Southern 3/5/25)	Stolen Bases	1, 6x (Charleston Southern 3/5)

## #27 RILEY FENNEL

Career (Last)	Category	2025
same	Runs	1, 5x (Charleston Southern 3/5)
same	Hits	1, 2x (Furman 3/4)
-	RBI	-
same	Doubles	1 (Furman 3/4)
-	Triples	-
-	Home Runs	-
-	Walks	-
same	HBP	1, 2x (Marshall 2/23)
-	Stolen Bases	-

## #28 MADDIE MOORE

Career (Last)	Category	2025
3, 4x (at Syracuse 4/6/24)	Runs	2, 8x (Charleston Southern 3/5)
4 (Lafayette 2/28/25)	Hits	4 (Lafayette 2/28)
5 (Pitt 4/23/23)	RBI	3 (Indiana 3/1)
2, 2x (Lafayette 2/28/25)	Doubles	2 (Lafayette 2/28)
1, 4x (Marshall 2/23/25)	Triples	1, 2x (Marshall 2/23)
2 (Mercer 3/8/23)	Home Runs	1, 7x (Duke 3/9)
3 (at Georgia 2/28/24)	Walks	2 (Charleston Southern 3/5)
2 (at Louisville 4/28/24)	HBP	1 (Eaton 2/21)
2, 2x (at Syracuse 4/6/24)	Stolen Bases	1, 2x (Indiana 3/2)

## #44 OLIVIA DUNCAN

Career (Last)	Category	2025
3.0, 2x (Lafayette 2/28/25)	IP	3.0, 2x (Lafayette 2/28)
3, 2x (Lafayette 2/28/25)	Runs Allowed	3 (Lafayette 2/28)
3, 2x (Lafayette 2/28/25)	Earned Runs	3 (Lafayette 2/28)
2, 2x (vs. Missouri State 2/9/25)	Walks Issued	2 (vs. Missouri State 2/9)
2 (vs. Missouri State 2/9/25)	Strikeouts	2 (vs. Missouri State 2/9)
7 (Lafayette 2/28/25)	Hits Allowed	7 (Lafayette 2/28)
1 (vs. Liberty 2/10/24)	Doubles Allowed	-
1 (Lafayette 2/28/25)	Triples Allowed	1 (Lafayette 2/28)
1 (at Charlotte 2/21/24)	Homers Allowed	-



### She Will Triumph

Celebrating the rich history of the people and events that have made Clemson Athletics what it is today while signifying the continued growth and competitive excellence of the future of women's athletics. Clemson celebrates the 50th year of varsity women's athletics at Clemson during the 2024-25 seasons.

## ACC STANDINGS

SCHOOL	CONF	CPCT.	OVERALL	PCT.	STREAK
North Carolina	3-0	1.000	22-4	.846	W4
California	3-0	1.000	19-4	.826	W13
Stanford	5-1	.833	17-3	.850	W5
Virginia Tech	2-1	.667	20-5	.800	W1
Louisville	2-1	.667	17-7	.708	W2
Duke	2-1	.667	17-8	.680	L1
Georgia Tech	4-2	.667	16-9	.640	W4
Virginia	1-2	.333	18-7	.720	W2
Clemson	1-2	.333	18-8	.692	L2
Notre Dame	1-2	.333	11-13	.458	L2
Florida State	0-0	.000	21-5	.808	W1
Syracuse	0-3	.000	16-6	.727	L3
NC State	0-3	.000	16-10	.615	W1
Boston College	0-3	.000	10-8	.556	L3
Pitt	0-3	.000	10-13	.435	L3